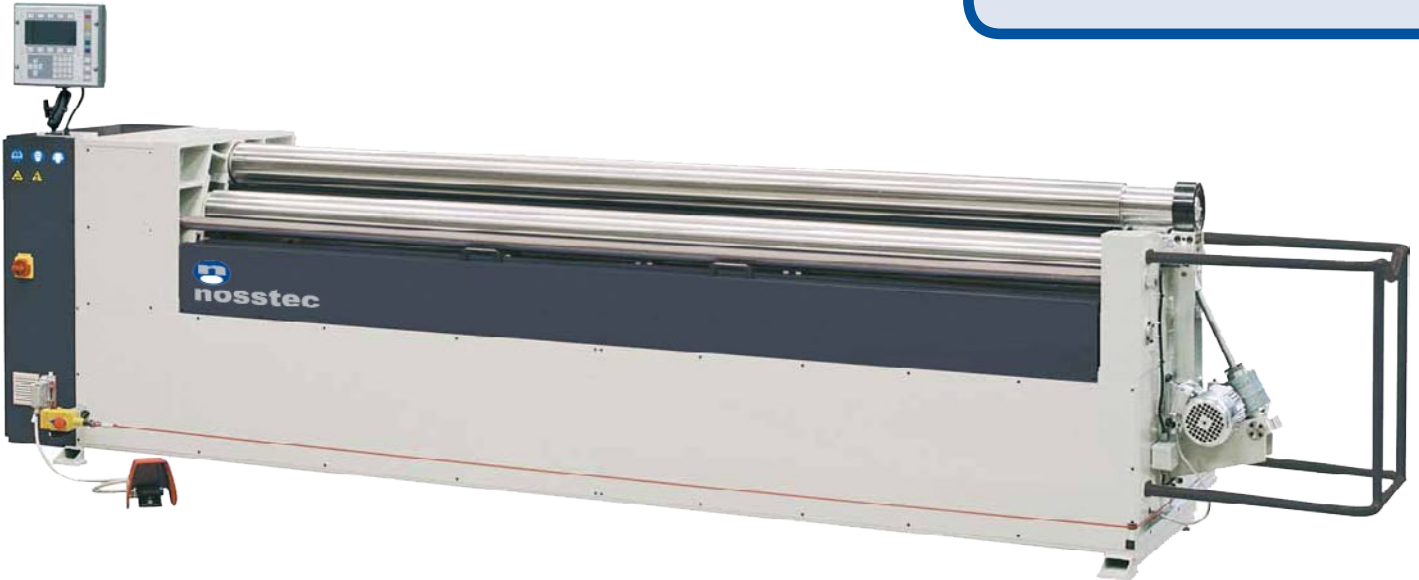




**nosstec**

## BENDING ROLL MACHINE 8268



Suitable for small to medium production and demanding applications, the 8268 is designed to meet the requirements for longer CNC rolls for tight radius bending. A welded steel frame and cast guides provide the necessary rigidity. The design with three rolls (pre-bending, bottom and bending roll) mounted independently in separate guides enables high productivity and easy adjustment of the rolls. The top roll is mounted above the middle roll making this machine a four-roll bender with symmetrically placed rolls. In order to control the bending result over the working length, the machine can be equipped with hydraulic crowning supports for the lower roll. This is carried out by three support blocks with four pressure bearings. The crowning is adjusted with a hand pump.

All four rolls are driven in order to prevent scratches on easily damaged sheets from slipping rolls. The movement of the three lower rolls is carried out by lead screws. The four-roll system eliminates the need for any intermediate handling of the sheet between pre-

bending and final bending. This ensures high repetition accuracy as well as a rapid and rational production. When the bending is finished the lock clamp on the right hand side opens to allow removal of the bent profile. This function can be eliminated in the program. As standard the machine is delivered with hardened and ground rolls, motor 400V 3-phase and 24V control voltage.

- ▶ CNC-control with the capacity to store 200 programs in internal memory and nearly unlimited by attaching an external USB flash drive
- ▶ Pre-bending and final bending in one cycle
- ▶ All four rolls are driven
- ▶ Crowned rolls
- ▶ Programmable axis
- ▶ Designed for highest accuracy
- ▶ Adjustable crowning of the lower roll
- ▶ Program backup through external computer or attached USB flash drive

Nosstec AB, Kristineholmsvägen 12, 441 39 Alingsås, SWEDEN

Tel: +46 (0)512 - 298 85 • Fax: +46 (0)512 - 298 89 • E-mail: [info@nosstec.se](mailto:info@nosstec.se) • Web: [www.nosstec.se](http://www.nosstec.se)

For copyright reasons all reproduction and copying of the texts, photos, tables and illustrations is prohibited without written permission from Nosstec AB.

## Simple to use control panel

The programming of the machine is facilitated by different menus available on the screen. In order to further simplify the programming, the control buttons are of multi-function type, whose functions are automatically changed when changing menus.

The CNC has an internal storage capacity of 200 programs or near unlimited with an external USB flash drive. The program consists of sections, where each section is provided with a bending value. This enables easy and quick programming of the machine for different bending operations.

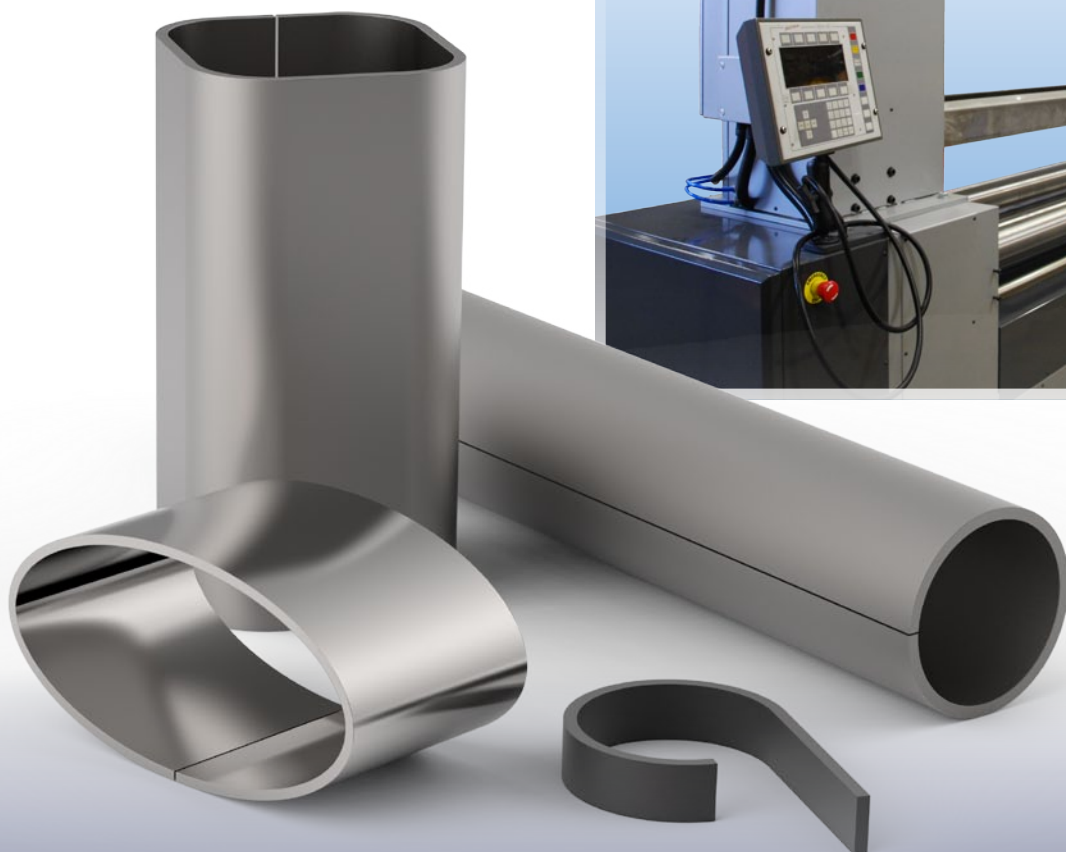
The CNC system can operate with interpolation, where the rolls are adjusted simultaneously with the feeding operation.

## Optional equipment

- ▶ Adjustable crowning support
- ▶ Chromium-plated rolls
- ▶ Adiprene-coated rolls
- ▶ Rolls with grooves
- ▶ Stacking tables
- ▶ Programmable support arm
- ▶ Additional safety equipment
- ▶ Infeed and outfeed equipment



Optional infeed and outfeed equipment



Product applications such as tubes and elliptical shapes.

Art.no.	8268	-1540	-1545	-1550	-1555	-2025	-2030	-2035	-2040	-2515	-2520	-2525	-2530	-3015	-3020
Capacity		15/40	15/45	15/50	15/55	20/25	20/30	20/35	20/40	25/15	25/20	25/25	25/30	30/15	30/20
Working length (w)	mm	1540	1540	1540	1540	2040	2040	2040	2040	2540	2540	2540	2540	3040	3040
Max. sheet thickness (400 N/mm <sup>2</sup> ) (t)	mm	4,0	4,5	5,0	5,5	2,5	3,0	3,5	4,0	1,5	2,0	2,5	3,0	1,5	2,0
Diameter of rolls (Ø)	mm	110	120	130	140	110	120	130	140	110	120	130	140	130	140
Motor output feeding motor	kW	2,2	2,2	2,2	2,2	2,2	2,2	2,2	2,2	2,2	2,2	2,2	2,2	2,2	2,2
Net. weight	kg	1800	1800	2100	2400	1800	2100	2400	2700	1800	2400	2700	3000	3000	3300

The prebending value is ca 70% of the indicated material.